

Tile Series Power Interface (See Figure 1) works in conjunction with Buspro Tile Series panels and provides working voltage and communication signals to the panel.

## Functions

- Provides working voltage to panel.
- Provides communication signals to panel.

## Important Notes

- The panel power interface should be installed on the wall box.
- The power interface should work in conjunction with panel.
- It is recommended to connect wires in hand-in-hand.
- It is recommended to use CAT5E or dedicated HDL Buspro cable.

## Product Information

Dimensions - See Figure 2 - 3

1. **Communication interface:** Provides working voltage and signals.
2. **Screw hole:** Used to secure the power interface into the wall box.
3. **Mounting slot**
4. **Metal plate**
5. **HDL Buspro bus connector**

Components - See Figure 4

## Safety Precautions

- The installation and testing for the product must be carried out by HDL Automation Co., Ltd. or its appointed service agencies. The electric construction shall comply with local laws and safety regulations.
- The device should be installed in wall box. HDL will not be responsible for any consequence caused by the inexpert or faulty installation and wiring methods, which are not in accordance with the instructions contained in this operating instruction.
- Please do not privately disassemble or replace any parts of the product. Otherwise, it may cause mechanical fault, electric shock, fire or personal injuries.
- Please contact our after-sales departments or our designated service agencies for your maintenance service. Product failures caused by private disassembly are not subject to this warranty.

## Package Contents

HDL-MPPI/TILE.48\*1 / Buspro connector\*1 / Screw\*2 / Datasheet\*1

HDL-MPPI/TILE.48

Tile Series Power Interface

buspro

### Datasheet

Issued: September 8, 2021

File Edition: A

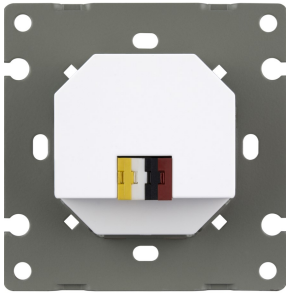


Figure 1. Tile Series Power Interface

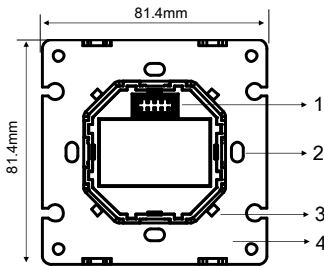


Figure 2. Dimensions - Front View

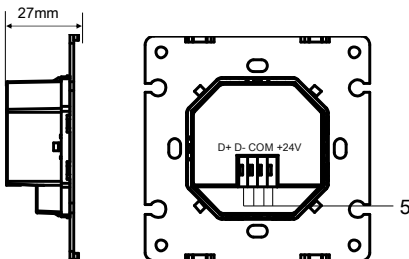


Figure 3. Dimensions - Side View

Figure 4. Components - Back View

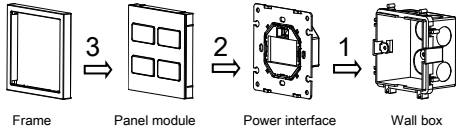


Figure 5. Installation

## Technical Data

### Basic Parameters

|                 |            |
|-----------------|------------|
| Working voltage | 12~30V DC  |
| Communication   | HDL Buspro |

### External Environment

|                           |            |
|---------------------------|------------|
| Working temperature       | -5°C~45°C  |
| Working relative humidity | ≤90%       |
| Storage temperature       | -20°C~60°C |
| Storage relative humidity | ≤93%       |

### Specifications

|   |                         |
|---|-------------------------|
| Dimensions                                  | 81.4×81.4×27 (mm)       |
| Net weight                                  | 69g                     |
| Housing material                            | Steel, ABS              |
| Installation                                | Wall box (See Figure 5) |
| Protection rating (Compliant with EN 60529) | IP20                    |

### Approved

CE

## HDL Buspro Cable Guide

| HDL Buspro | HDL Buspro Cable | CAT5/CAT5E               |
|------------|------------------|--------------------------|
| DATA+      | Yellow           | Blue/Green               |
| DATA-      | White            | Blue white/Green white   |
| COM        | Black            | Brown white/Orange white |
| 24V DC     | Red              | Brown/Orange             |

## Installation

### Installation - See Figure 5

- Step 1. Install the wall box in the wall.
- Step 2. Secure the power interface onto the wall box with screws.
- Step 3. Install the panel on the power interface.
- Step 4. Install the frame around the panel.

#### Technical support

E-mail: [hdtickets@hdlautomation.com](mailto:hdtickets@hdlautomation.com)  
 Website: <https://www.hdlautomation.com>

©Copyright by HDL Automation Co., Ltd. All rights reserved.  
 Specifications subject to change without notice.